

Phone: 22679009  
 AFTN : HECAYOYX  
 Telex : 93044 TYRAN UN  
 Fax : 22678882 & 22678885

ARAB REPUBLIC OF EGYPT  
 MINISTRY OF CIVIL AVIATION  
 NATIONAL AIR NAVIGATION SERVICES COMPANY  
 AERONAUTICAL INFORMATION SERVICES  
 CAIRO 11776

AIRAC AIP  
 SUPPLEMENT  
 1/22  
 16 DEC 2021

**Effective date 27 JAN 2022 at 1200 UTC**

**SUPPLEMENT TO  
 THE AIP A.R.E  
 AD**

**ASWAN INTL AP (HESN)**

**Till 2401010001EST**, RWY 17/35 CLSD and all the related charts, procedures and data are suspended. TWY A, B, C, D, E and F CLSD between RWY 17/35 and RWY 17L / 35R. TWY (A) used as main RWY with the FLW characteristics :

■ **Runway Physical Characteristics**

Designations RWY NR	True BRG	Dimensions of RWY (M)	Strength (PCN) and surface of RWY and SWY	THR coordinates & geoid undulation	THR ELEV & highest ELEV of TDZ of precision APP RWY (MSL)
1	2	3	4	5	6
35R	351.1°	3401 X 45	PCN	235657. 83N 0324926. 54E	THR 662FT
17L	171.1°		60/F/A/X/T ASPH	235846. 94N 0324907. 47E	THR 614FT
Slope of RWY-SWY	SWY dimensions (M)	CWY dimensions (M)	Strip Dimensions (M)	OFZ	Remarks
7	8	9	10	11	12
0.4%	NIL	NIL	3521 x 150	NIL	NIL

■ **Declared Distances**

RWY designator	TORA ( M )	TODA ( M )	ASDA ( M )	LDA ( M )	Remarks
1	2	3	4	5	6
35R	3401	3401	3401	3401	NIL
17L	3401	3401	3401	3401	NIL

## ■ Approach and Runway Lighting

RWY Designator	APCH LGT Type LEN INTST	THR LGT Colour WBAR	VASIS (MEHT) PAPI	TDZ, LGT LEN	RWY Centre Line LGT Length, Spacing, Colour, INTST	RWY Edge LGT LEN, Spacing Colour INTST	RWY End LGT Colour WBAR	SWY LGT LEN (M) Colour	RMK
1	2	3	4	5	6	7	8	9	10
35R	SALS 420M LIH	Green –	PAPI 3° Left side only	NIL	NIL	600M Y 60M LIH & 2800M W 60M LIH	Red –	NIL	NIL
17L	SALS 300M LIH	Green –	PAPI 3° Left side only	NIL	NIL	600M Y 60M LIH & 2800M W 60M LIH	Red –	NIL	NIL

## ■ RWY Marking and Light

ID, CL & aiming point	:	Marked and unlighted
THR & edge	:	Marked and lighted

## ■ Use of RWY system

Take-off Minima is 300M RVR.

### **RWY 35R / 17L**

For VOR & RNP approach, No landing clearance will be issued when RVR is less than 2000M

### **Notes :**

- 1- See the attached charts related to this AIRAC AIP SUP
- 2- AIC NR 03/21 is hereby cancelled.

**END**

# Attachment to AIP AIRAC SUP 1/22

**AERODROME CHART - ICAO**

23 57 52N  
032 49 12E

ELEV 662FT

TWR	118.3
Fire	121.9
RADAR	120.3
EMERG	121.5

ASWAN/**ASWAN**

BEARINGS ARE MAGNETIC  
ELEVATIONS IN FEET  
DIMENSIONS IN METRES

N  
VAR 4°E 2020

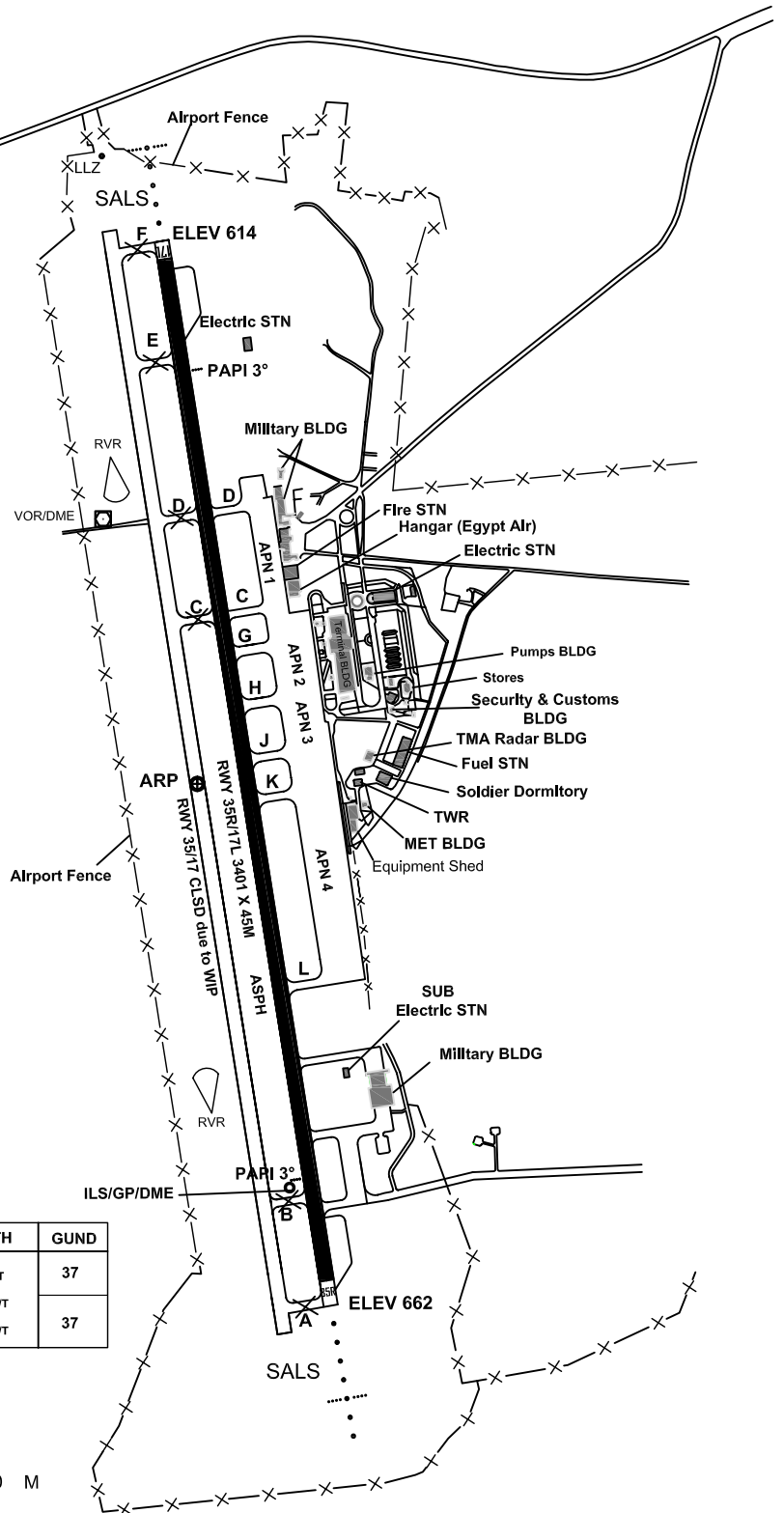
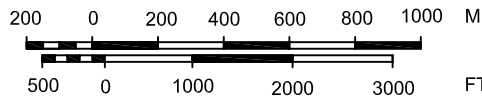
TWY H&G 30M  
TWY C,J,K&L 25M  
TWY A ,B,D,E&F 23M

TWYs A, B,C,D,E,F Between RWY 17/35  
& RWY 17L/35R CLSD DUE to WIP

APCH Radar Antenna

RWY	MAG DIRECTION	THR	STRENGTH	GUND
17L	167°	23 58 47N 032 49 07E	RWY & TWY PCN 60/F/A/X/T APN 1 to 3 PCN 69/R/B/W/T APN 4	37
35R	347°	23 56 58N 032 49 27E	PCN 67/R/B/W/T	37

SCALE



# Attachment to AIP AIRAC SUP 1/22

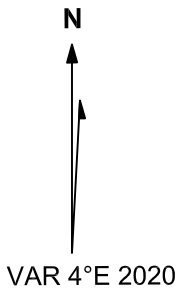
## AIRCRAFT PARKING/ DOCKING CHART- ICAO

APN ELEV 638 FT

TWR 118.3  
Fire 121.9  
RADAR 120.3  
EMERG 121.5

ASWAN/ASWAN

BEARINGS ARE MAGNETIC  
ELEVATIONS IN FEET  
DIMENSIONS IN METRES

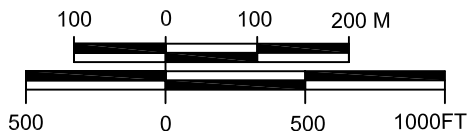


APRON 1 to 3 PCN 69/R/B/W/T  
APRON 4 PCN 67/R/B/W/T  
in APRON and TWY FLW TWR instruction  
- Vehicles movement is prohibited  
during ACFT movement

STAND NO	COORDINATES	ELEV
1	23 58 21.3N 032 49 18.1E	638.3FT
2	23 58 17.7N 032 49 19.8E	638.1FT
3	23 58 13.9N 032 49 20.5E	638.2FT
4	23 58 10.4N 032 49 21.0E	638.0FT
5	23 58 08.9N 032 49 23.7E	637.9FT
6	23 58 08.6N 032 49 21.9E	637.9FT
7	23 58 08.4N 032 49 19.9E	637.9FT
8	23 58 04.6N 032 49 23.8E	637.9FT
9	23 58 04.2N 032 49 21.4E	637.7FT
10	23 57 59.3N 032 49 24.5E	637.6FT
11	23 57 58.9N 032 49 22.0E	637.6FT
12	23 57 53.6N 032 49 26.1E	636.5FT
13	23 57 53.3N 032 49 24.2E	636.5FT
14	23 57 53.1N 032 49 22.5E	636.5FT
15	23 57 47.1N 032 49 22.2E	637.0FT
16	23 57 44.8N 032 49 22.6E	637.0FT
17	23 57 42.2N 032 49 23.0E	636.9FT
18	23 57 39.8N 032 49 23.4E	636.9FT
19	23 57 37.3N 032 49 23.8E	636.8FT
20	23 57 34.9N 032 49 24.2E	636.9FT
21	23 57 32.5N 032 49 24.6E	636.8FT
22	23 57 47.8N 032 49 27.8E	637.2FT
23	23 57 45.4N 032 49 28.2E	637.1FT
24	23 57 42.9N 032 49 28.5E	636.9FT
25	23 57 40.5N 032 49 28.9E	637.0FT
26	23 57 38.1N 032 49 29.3E	636.9FT
27	23 57 35.6N 032 49 29.7E	636.7FT
28	23 57 33.2N 032 49 30.1E	636.7FT

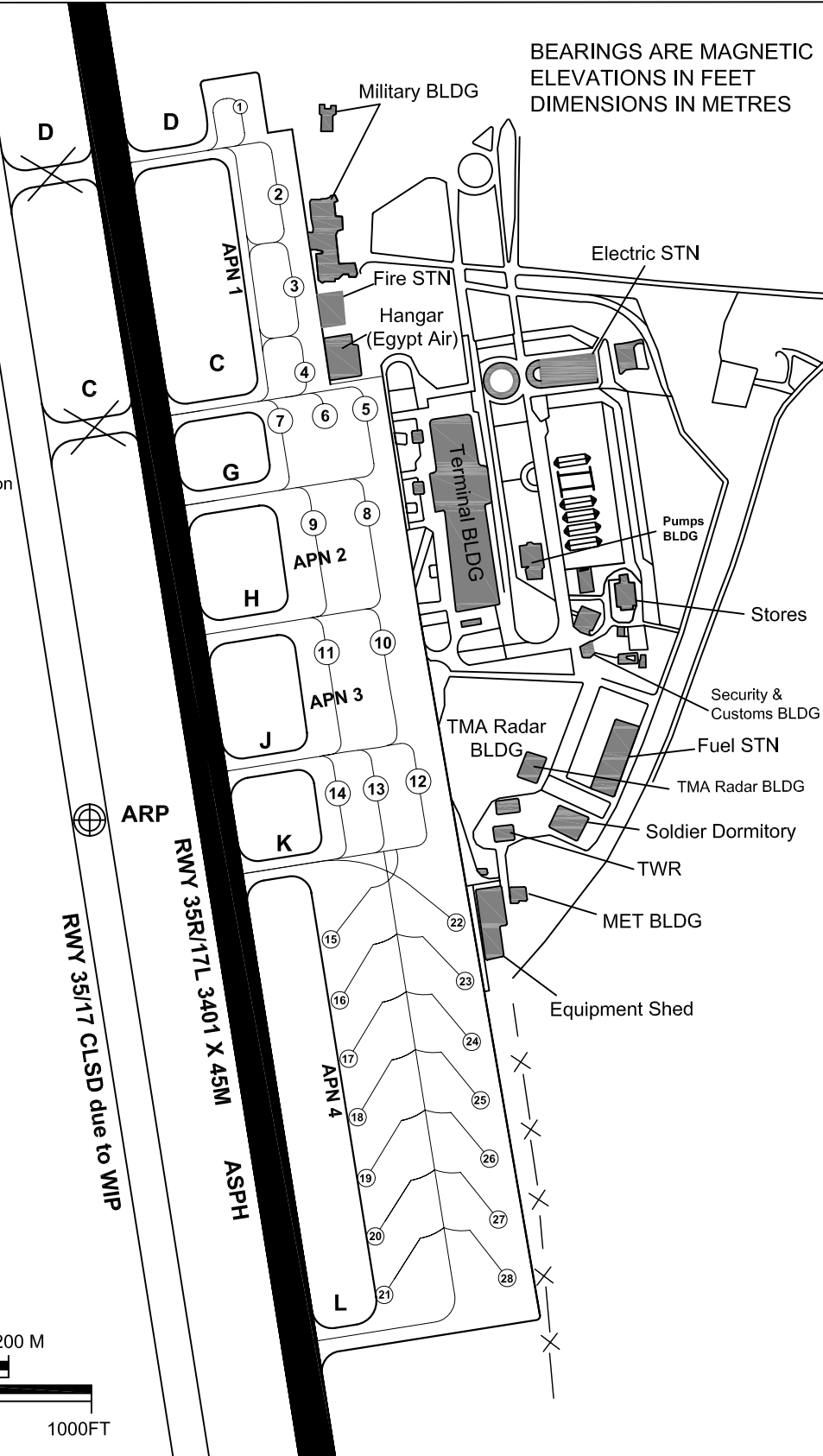
STAND NO	Wing Span	Max Tail Height
1	Up to wing span 36m	16.90m
2,3&4	Up to wing span 36m	17.50m
5	Up to wing span 36m	27.63m
6	Up to wing span 36m	19.63m
7	Up to wing span 36m	11.63m
8	Up to wing span 65m	25.12m
9	Up to wing span 36m	15.52m
10	Up to wing span 65m	25.06m
11	Up to wing span 36m	14.33m
12	Up to wing span 36m	27.24m
13	Up to wing span 36m	19.39m
14	Up to wing span 36m	12.24m
15	Up to wing span 36m	12.14m
16	Up to wing span 36m	11.97m
17	Up to wing span 36m	11.86m
18	Up to wing span 36m	11.74m
19	Up to wing span 36m	11.63m
20	Up to wing span 36m	11.51m
21	Up to wing span 36m	11.40m
22 to 28	Up to wing span 48m	not restricted

### SCALE



ARP  
RWY 35/17 CLSD due to WIP

RWY 35R/17L 3401 X 45M ASPH



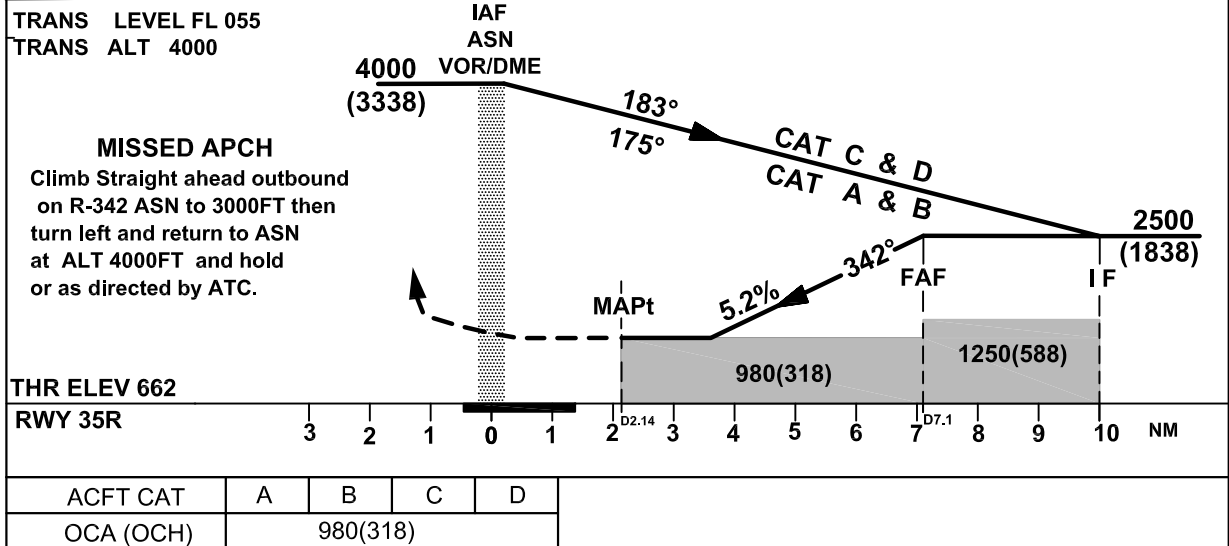
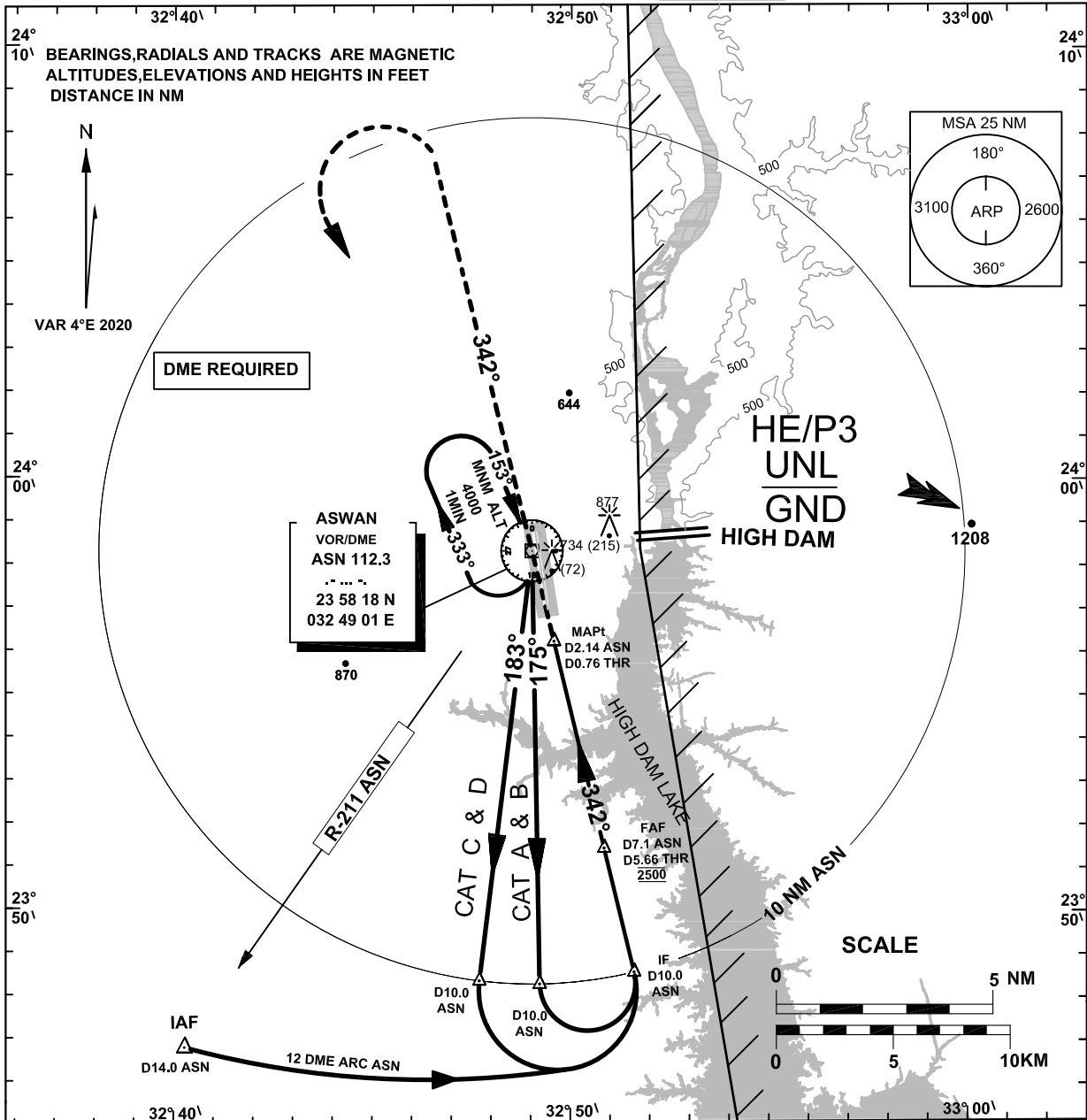
# Attachment to AIP AIRAC SUP 1/22

**INSTRUMENT  
APPROACH  
CHART-ICAO**

**AERODROME ELEV 662FT**  
HEIGHTS RELATED TO  
AD ELEVATION

**TWR 118.3**  
**Fire 121.9**  
**RADAR 120.3**  
**EMERG 121.5**

**ASWAN / ASWAN**  
**VOR RWY 35R**



# Attachment to AIP AIRAC SUP 1/22

ASWAN (HESN)

VOR RWY 35R

## AERONAUTICAL DATA TABULATION

<b>VOR APCH to RWY 35R from ASN VOR</b>	
<b>Fix/point</b>	<b>Coordinates</b>
ASN VOR/DME (IAF)	23 58 18.4N 032 49 01.0E
D10 ASN –TR183°/10NM ASN FOR ACFT (C&D)	23 48 20.6N 032 47 42.1E
D10 ASN –TR175°/10NM ASN FOR ACFT (A&B)	23 48 16.3N 032 49 13.3 E
D10 ASN– TR 342° /10NM ASN (IF)	23 48 33.3 N 032 51 36.1 E
D7.1 ASN –TR 342°/D7.1 ASN,5.66NM THR (FAF)	23 51 25.5 N 032 50 50.5 E
(MAPt) D2.14 ASN ,0.76NM THR	23 56 12.8N 032 49 34.3 E
THR RWY 35R	23 56 57.83N 032 49 26.54 E

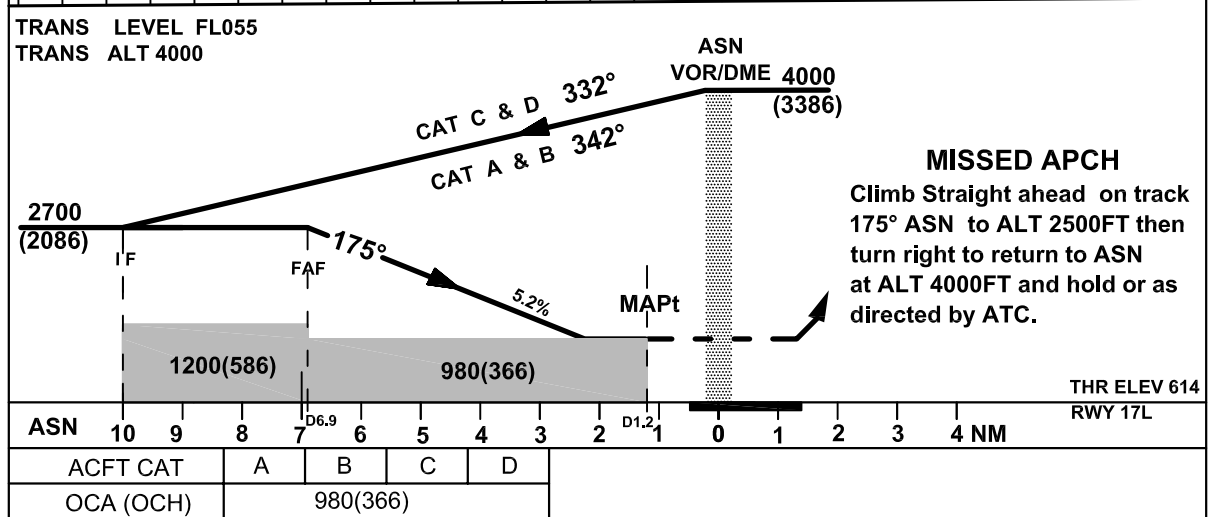
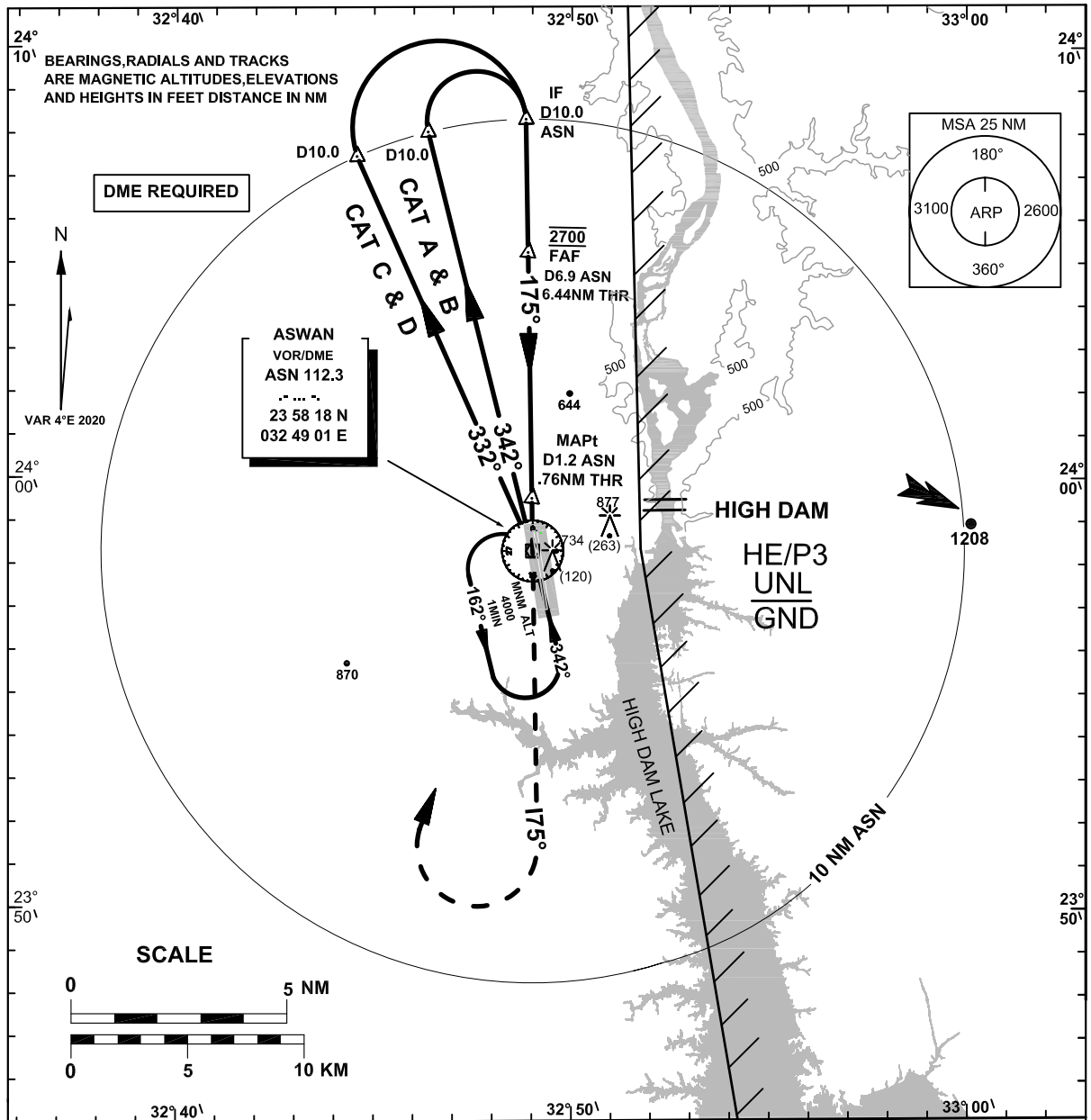
# Attachment to AIP AIRAC SUP 1/22

**INSTRUMENT  
APPROACH  
CHART-ICAO**

**AERODROME ELEV 662FT  
HEIGHTS RELATED TO  
THR RWY 17L ELEV 614 FT**

TWR 118.3  
Fire 121.9  
RADAR 120.3  
EMERG 121.5

**ASWAN / ASWAN  
VOR RWY 17L**



# Attachment to AIP AIRAC SUP 1/22

ASWAN (HESN)

VOR RWY 17L

## AERONAUTICAL DATA TABULATION

<b>VOR APCH to RWY 17L from ASN VOR</b>	
<b>Fix/point</b>	<b>Coordinates</b>
ASN VOR/DME (IAF)	23 58 18.4N 032 49 01.0E
D10 ASN –TR332°/10NM ASN FOR ACFT (C&D)	24 07 28.2N 032 44 33.3E
D10 ASN –TR342°/10NM ASN FOR ACFT (A&B)	24 08 02.5N 032 46 21.4E
D10 ASN– TR 175° /10NM ASN (IF)	24 08 20.5 N 032 48 50.2E
D6.9 ASN –TR 175°/7.44NM THR (FAF)	24 05 14.7N 032 48 53.5 E
(MAPt) D1.2 ASN ,0.76NM THR	23 59 31.8 N 032 48 59.7E
THR RWY 17L	23 58 46.94 N 032 49 07.47E



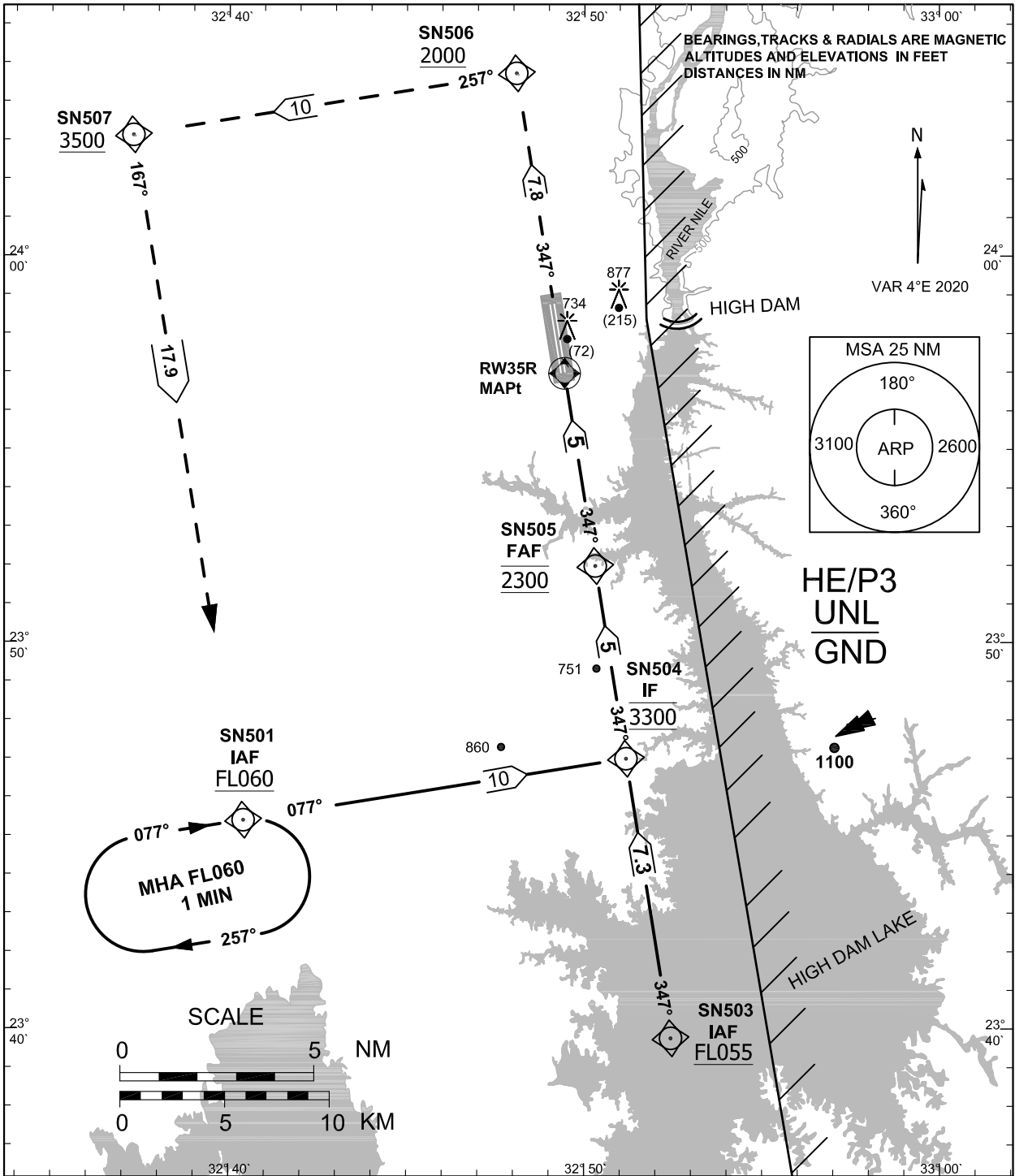
# Attachment to AIP AIRAC SUP 1/22

## INSTRUMENT APPROACH CHART - ICAO

**AERODROME ELEV 662 FT**  
**HEIGHTS RELATED TO AD ELEV**

TWR	118.3
Fire	121.9
RADAR	120.3
EMERG	121.5

**ASWAN / ASWAN**  
**RNP RWY 35R**



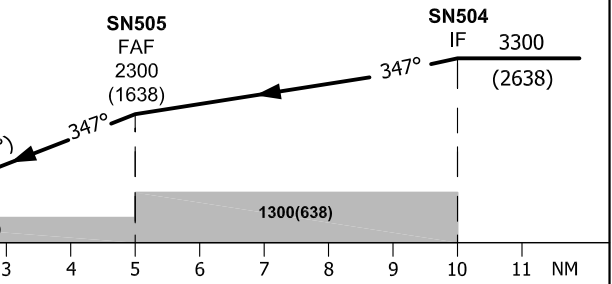
TRANS LEVEL FL 055  
 TRANS ALT 4000

### MISSED APCH

Climb direct to SN506 at or above 2000  
 Turn left to SN507 at or above 3500  
 Turn left climbing to SN501 at FL060  
 and hold or as directed by ATC .

THR ELEV 662  
 RWY 35R

OCA(OCH)	A	B	C	D
LNAV	980(318)			



GND speed -Kts	70	90	100	120	140	160
Rate of Descent FAF-MAPt (3.0°)5.2%	372	478	531	637	743	850

# Attachment to AIP AIRAC SUP 1/22

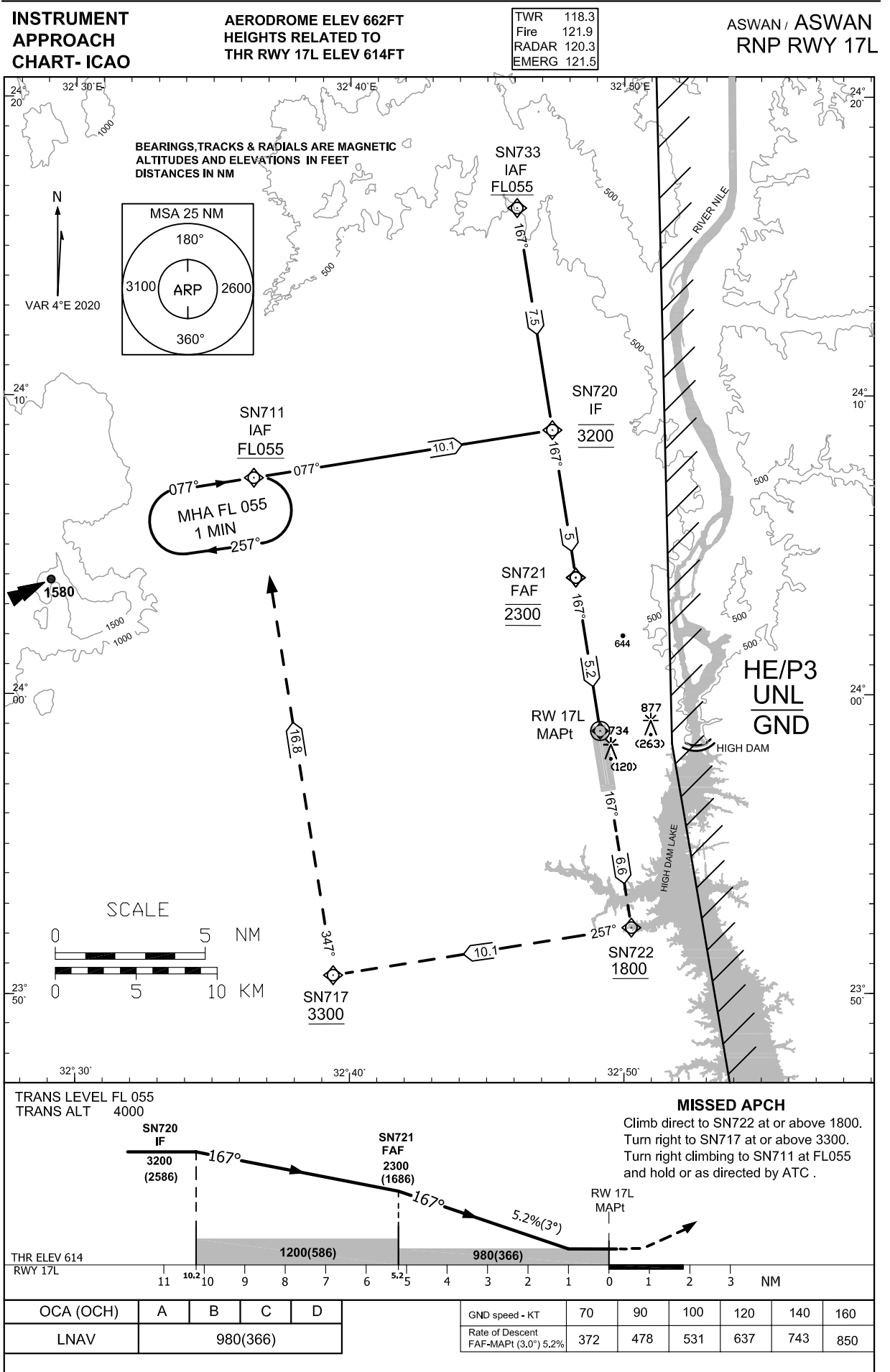
<b>Instrument Approach CHART-ICAO</b>	AD ELEV 662FT HEIGHTS RELATED TO AD ELEVATION	TWR 118.3 FIRE 121.9 RADAR 120.3 EMERG 121.5	<b>ASWAN / ASWAN RNP RWY 35R</b>
---	---	---	--------------------------------------

<b>TABULAR DESCRIPTION</b>											
Serial Number	Path Descriptor	Waypoint Identifier	Fly-Over	Course °M(°T)	Magnetic Variation	Distance (NM)	Turn Direction	Altitude(ft)	Speed (Kts)	VPA/TCH	Navigation Specification
010	IF	SN501	-	-	-4	-	-	+FL060	-	-	RNP APCH
020	TF	SN504	-	077(080.8)	-4	10	L	@3300	-	-	RNP APCH
010	IF	SN503	-	-	-4	-	-	+FL055	-	-	RNP APCH
020	TF	SN504	-	347(350.9)	-4	7.3	-	@3300	-	-	RNP APCH
010	IF	SN504	-	-	-	-	-	@3300	-	-	RNP APCH
020	TF	SN505	-	347(350.9)	-4	5	-	@2300	-	-	RNP APCH
030	TF	RW35R	Y	347(350.9)	-4	5	-	-	-	-3.0/50	RNP APCH
040	TF	SN506	-	347(350.9)	-4	7.8	L	+2000	-	-	RNP APCH
050	TF	SN507	-	257(260.9)	-4	10	L	+3500	-	-	RNP APCH
060	TF	SN501	-	167(170.9)	-4	17.9	-	+FL060	-	-	RNP APCH
070	HM	SN501	-	077(080.8)	-4	1 MIN	R	+FL060	-	-	RNP APCH

## WAYPOINT LIST

Waypoint Identifier	Coordinates
SN501	23° 45' 23.9" N    032° 40' 24.8" E
SN503	23° 39' 45.5" N    032° 52' 26.4" E
SN504	23° 46' 59.6" N    032° 51' 10.8" E
SN 505	23° 51' 58.7" N    032° 50' 18.7" E
RW35R	23° 56' 57.84"N    032° 49' 26.54"E
SN506	24° 04' 43.5" N    032° 48' 05.0" E
SN507	24° 03' 07.6" N    032° 37' 17.6" E

# Attachment to AIP AIRAC SUP 1/22



# Attachment to AIP AIRAC SUP 1/22

<b>Instrument Approach CHART-ICAO</b>	AD ELEV 662FT HEIGHTS RELATED TO THR RWY 17 L ELEV 614FT	TWR 118.3 FIRE 121.9 RADAR 120.3 EMERG 121.5	<b>ASWAN / ASWAN RNP RWY 17L</b>
---	---	---	--------------------------------------

## TABULAR DESCRIPTION

Serial Number	Path Descriptor	Waypoint Identifier	Fly-Over	Course °M(°T)	Magnetic Variation	Distance (NM)	Turn Direction	Altitude(ft)	Speed (Kts)	VPA°/TCH (FT)	Navigation Specification
010	IF	SN711	-	-	-4	-	-	+FL 055	-	-	RNP APCH
020	TF	SN720	-	077(080.7)	-4	10.1	R	@3200	-	-	RNP APCH
010	IF	SN733	-	-	-4	-	-	+FL 055	-	-	RNP APCH
020	TF	SN720	-	166(170.2)	-4	7.5	-	@3200	-	-	RNP APCH
010	IF	SN720	-	-	-4	-	-	@3200	-	-	RNP APCH
020	TF	SN721	-	167(170.8)	-4	5	-	@2300	-	-	RNP APCH
030	TF	RW17L	Y	167(170.9)	-4	5.2	-	--	-	-3.0/50	RNP APCH
040	TF	SN722	-	167(170.9)	-4	6.6	R	+1800	-	-	RNP APCH
050	TF	SN717	-	257(260.8)	-4	10.1	R	+3300	-	-	RNP APCH
060	TF	SN711	-	347(350.8)	-4	16.8	-	+ FL 055	-	-	RNP APCH
070	HM	SN711	-	077(080.7)	-4	1 MIN	R	+FL 055	-	-	RNP APCH

## WAYPOINT LIST

Waypoint Identifier	Coordinates
SN711	24° 07' 14.1" N 032° 36' 28.9" E
SN733	24° 16' 16.8" N 032° 46' 04.2" E
SN720	24° 08' 50.9" N 032° 47' 22.1" E
SN721	24° 03' 54.8" N 032° 48' 13.8" E
RW17L	23° 58' 46.94" N 032° 49' 07.47" E
SN722	23° 52' 11.9" N 032° 50' 16.3" E
SN717	23° 50' 35.4" N 032° 39' 24.9" E